

IN YOUR SCIENCE JOURNAL, make a list or describe the patterns you see for topography, climate variable 1, and climate variable 2. Also describe how you think each of these variables affects vegetation (together and separately).

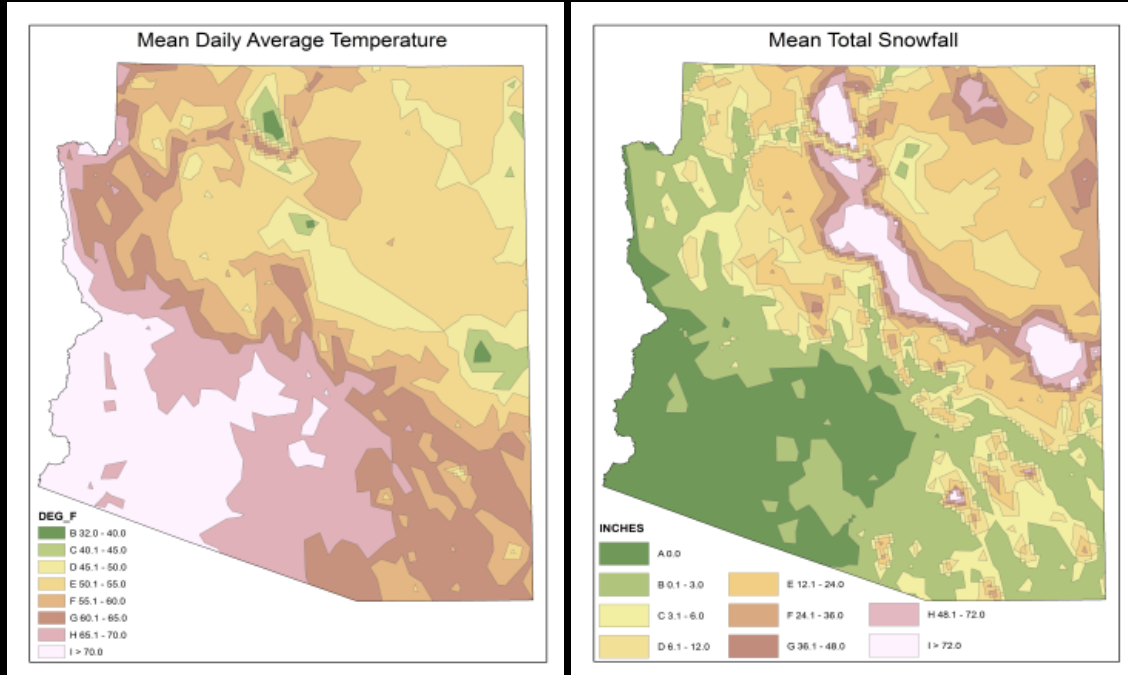
HINT: You can stack your maps on top of each other to see how the variables relate to each other and to topography.

Apr 19-8:58 PM

Where do the climate variables come from?

Apr 19-8:58 PM

Why might your maps be different? Why might it matter?



Apr 19-8:58 PM

Why do we care?

Apr 19-8:58 PM

Your job today:

1. Make a list (in your science notebook...may help you write your paragraph later) that compares your maps to the vegetation map.
2. Pick one species from the books.
3. Based on the information from the books, use the maps you created along with the topographic and vegetation maps to map the distribution of the species.
4. Write a paragraph that answers these questions:
 - What resources do the species you selected need to survive?
 - Why are the climate variables and vegetation and/or species distributions related?
 - Would the distribution of the species change if one of the variables you selected changed (e.g. rainfall declined, temperature increased, or number of frost days increased)?
 - What factors might play a role in the survival of the species (think back to natural selection and the characteristics your species has)?
 - Do you think other variables (addition of or instead of) might be more helpful in explaining the distribution of the species you selected to map?
 - Do you think one variable alone can describe the distributions of species? If so, which one and why is that one important? If not, why?

Apr 19-8:58 PM